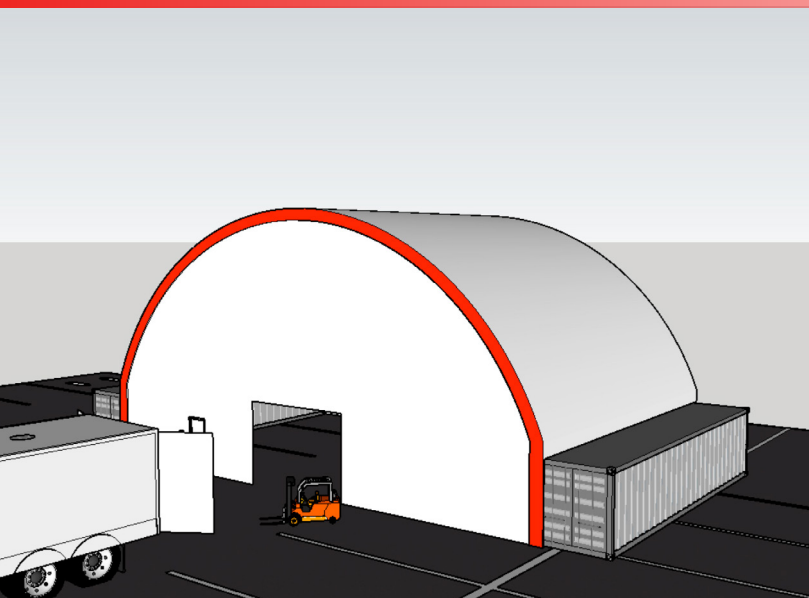


TRIDOME

STRUCTURES LTD



Quick-Build Manufacturing Dome



Strong buildings, Strong communities

www.tridomestructures.com - 1-833-387-4366



THE CALL TO MOBILIZE MANUFACTURING HAS BEEN MADE

Having a building that can be shipped, assembled and used quickly is paramount.

Tension fabric covered buildings can create space for storage, manufacturing, clean rooms, or testing centres. Tridome Structures wants to ensure the manufacturing community has what they need most to be successful in assisting in the fight of COVID-19.

- Structure - engineered to last decades, through the toughest weather. Suitable for temporary or permanent use. Fire rated
- HVAC - climate control and ventilation through isolated systems
- Prime power - Generac providing prime rated power to ensure critical equipment remains running
- Optional insulation for cold weather operation.
- Interior - negative and positive pressures achievable. Customizable and compartmentalized dividers, LED lighting, insulation, sealed flooring.
- Usage - increase storage, manufacturing space, sanitation rooms, cleanrooms, and temporary expansions.
- Other key features - rapidly deployable anywhere in North America. Built within days, scalable and customizable as needed.

Column free, clear span floor plans allows for the maximum usage of space within the building. Use as an open space or pair with one or more of our partners to create a unique space. Natural light creates a safe, shadow-free environment to work in.

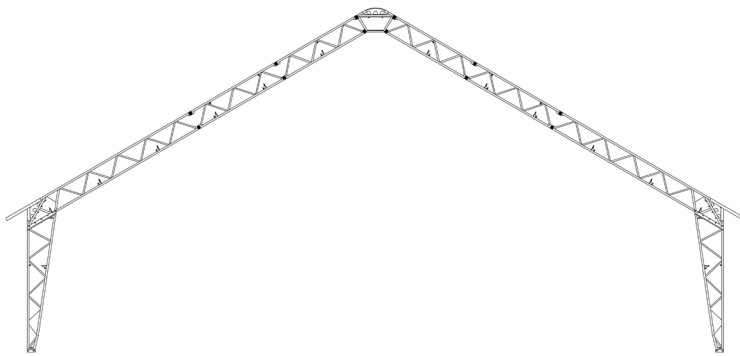
As a part of Tridome Structures commitment to helping the fight against COVID-19, we now are offering special in-house leasing and buyback options for companies producing supplies for medical purposes. This keeps initial funds for companies available for much supplies.



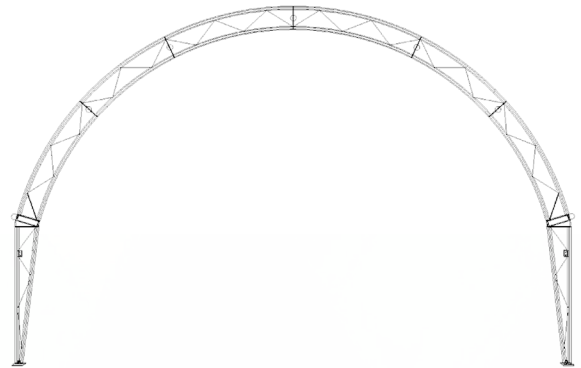
TRIDOME

STRUCTURES LTD

We are able to offer two different styles of roof lines and have approximately 100 buildings ready to ship immediately, which is equivalent to over 300,000 sqft of space. The largest building available to ship immediately is 32,000 sqft. Our current manufacturing capacity is over 200,000 sqft a week.



Peaked-roof style outline can be a width of 70' to a maximum of 250', on a standard leg of 15' on the interior. Average build time is 8-10 days.



Classic dome style outline can be a width of 20' - 80', can be placed directly on the ground or on steel legs at 2', 4', 6', 8', 10'. Average build time is 72 hours.

As Tridome Structures continues to offer a great building, we are working with these companies to deliver a complete package.

ASTOUND

GENERAC®

BATTLEFIELD CAT THE RENTAL STORE

Matrax
One Size Does Not Fit All.



www.tridomestructures.com - 1-833-387-4366

